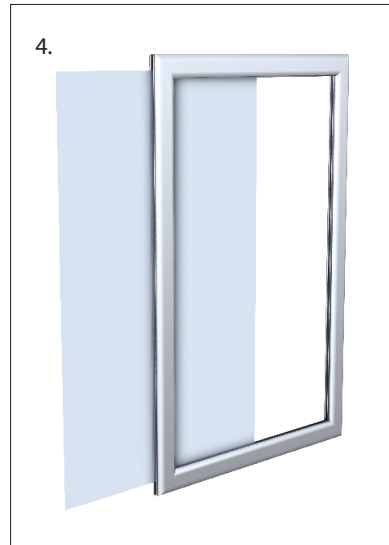
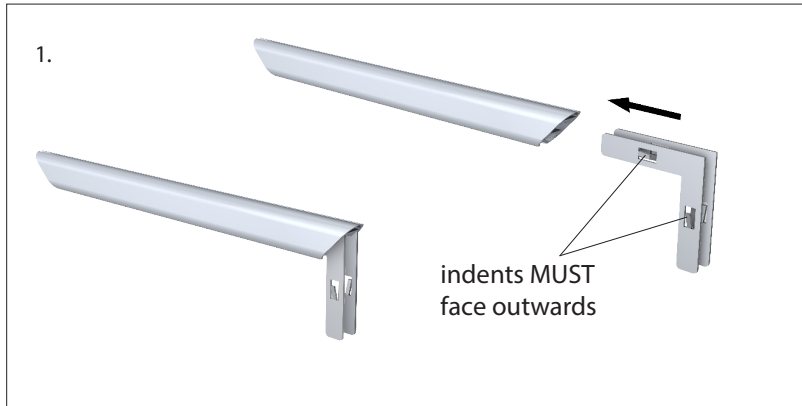


Perfex™ Curvilinear - PXCv Series

FRAME ASSEMBLY (Skip to page 2 if frame is already assembled)

1. Slide corner brackets into top frame sections as shown, with raised indents facing outwards. Repeat for the bottom section.
2. Press top and bottom frame sections into the side section.
3. Press side half sections into the frame to complete unit assembly.
4. Slide graphic into the frame.

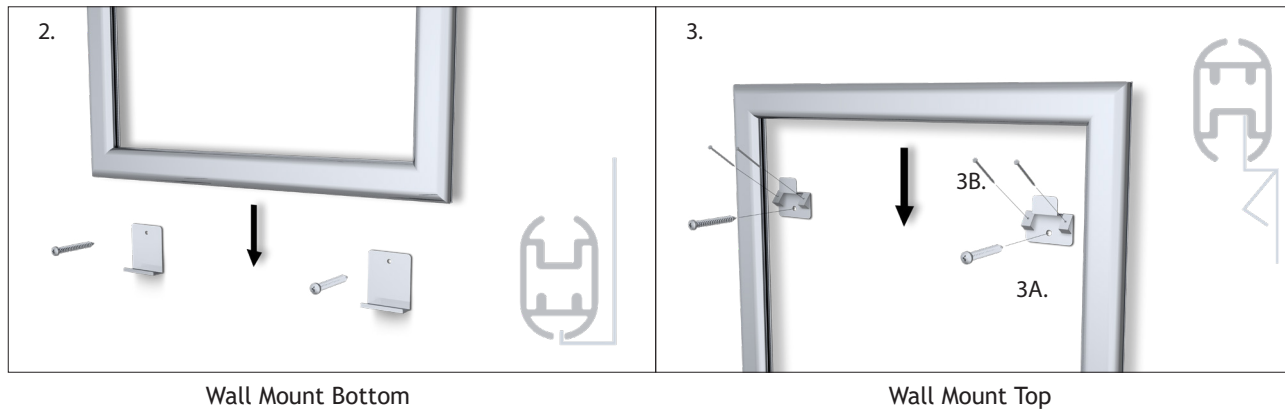


Perfex™ Curvilinear - PXC Series

FRAME MOUNTING

1. If mounting on drywall or hollow walls, pre-drill a 3/16" hole and insert molly anchors provided (not shown).
2. Screw bottom wall mount brackets to wall.
3. Screw top wall mount brackets to wall (3A) or hammer nails into wall to secure (3B).
4. If frame is being hung from ceiling, insert hanging clips and use wire to hang (not shown).

If mounting to the wall:



If hanging from the ceiling:

